

Parquet installation guide

Herringbone (Tongue & groove installation)

1. To start, ensure that no damage has been done to the flooring during transportation and that your substrate meets the installation conditions. Check that the doors in the room clear the thickness of the flooring. If not, plane them.

Warning: Chevron is compatible with glued-down installation only.

2. To create a herringbone pattern, you'll need 2 types of planks: "Left" and "Right".

All planks should be marked with an «L» or «R» on the back. Make sure the grooves always point in the installation direction. Determine which wall you'll use to start the installation. To do this, take the shape of your room into consideration to determine and draw the central axis. For L-shaped or U-shaped parts, please refer to the diagrams on the installation sheet.

3. For glued installation, wedge and install the first boards without gluing them to ensure perfect alignment in the door axis.

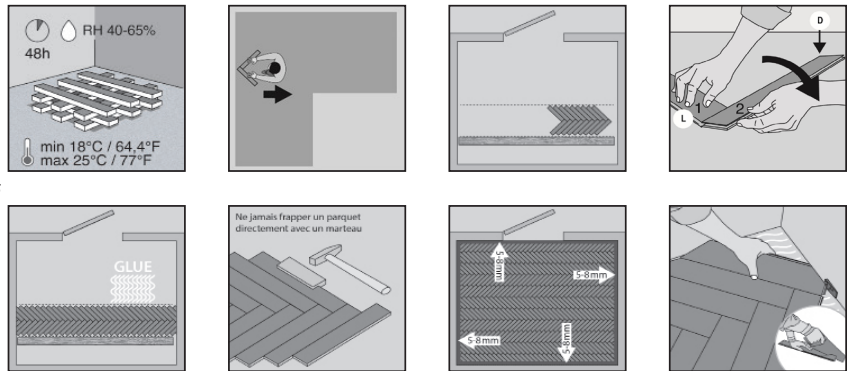
4. To do this, start by taking an L plank and a R plank. Orient them at a 45° angle with the long side of the lateral groove towards you, and assemble them.

5. Once the first central row is completely installed, glue the adjacent surface using BerryAlloc Glue (code: 9310-0024) to install the different rows. Start laying the first row of parquet on the fresh glue.

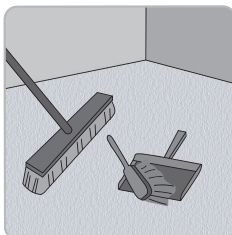
6. Firmly press the parquet to equalize the glue grooves and transfer the glue to the back of the floor. Never strike the planks directly with a hammer. Always use a tapping block between the hammer and the floorboards.

7. Finish installing the missing rows up to the wall. Take the 5-8 mm expansion joint into consideration.

8. Keep the cutouts to one side to finalise the installation on the opposite side.

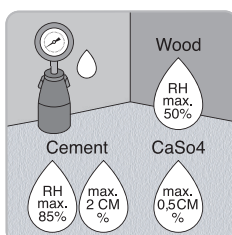
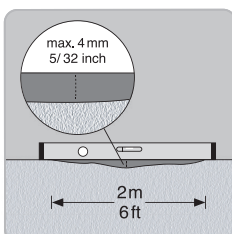


UNDERFLOOR SPECIFICATIONS WHEN INSTALLING PARQUET :



Your parquet can be installed on all the following types of underfloor: fibreboard, chipboard, plywood, ceramic, cement screeds, PVC flooring, linoleum, tiles, old parquet or old floors. For any other surface, please contact BerryAlloc support who can advise you further. The installation of the parquet must be carried out on a surface with a rigid support, resistant to pressure and bending. This support must be: **clean, level, dry and healthy**, that means :

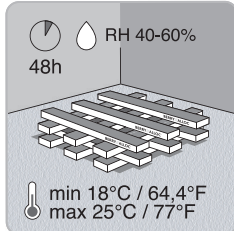
- **Clean** : thoroughly clean the surface of the substrate to remove all residue and roughness of the old coating.
- **Plan** : check if the floor is level using a 2 m ruler. The deviations (depressions or protrusions) must be limited to 4 mm and no longer than 1 mm deviation per 20 cm. Sand or level if necessary.
- **Dry** : the moisture content of the cement screed or levelling compound must not exceed 3% using the carbide bomb method (on average, allow at least 15 days per centimetre of thickness for normal screeds. In the case of levelling, allow at least 5 days for 3 mm). For calcium sulphate-based fluid screeds, the residual moisture content must be less than or equal to 0.5%. Wooden substrates: the maximum moisture content of wooden substrates is 10%. For installation on concrete screed, it is highly recommended to use a polyethylene film of at least 0.2 mm thickness in order to reduce possible moisture build-up. This film (as opposed to a vapour barrier film) is compulsory when this slab is in direct contact with the floor. This insulating film should be laid with a minimum overlap of 20 cm between strips and a minimum of 3 cm of skirting board around the edge (Note: this barrier is intended to prevent any moisture from rising up. It does not constitute a completely watertight barrier if there is significant rising damp). To improve acoustic comfort, the parquet floor should be laid on an additional suitable underlay.
- **Healthy** : dried the surface of dust or grease. The surface must be free of dust, cracks and dirt.



Special cases of specific supports

We advise you to consult the BerryAlloc technical support team. We would like to draw your attention to the fact that engineered parquet floors are in general not load-bearing.

STORAGE AND CONDITIONS OF INSTALLATION ON SITE (UTD)



Before installation, store your parquet floor laying down in the room of installation (under the conditions defined above) in their original packaging for 24 to 48 hours. Only open the packages at the time of installation.

Installing your floor should be the last job on a construction site. The underfloor must be completely dry, the windows must be installed, along with all structural and finishing work (plaster, tiling, paint, wallpaper, etc.) – these must be finished and dry as well. The room should be completely dry, closed, at an ambient temperature between 18 and 20 ° C, with a constant air humidity between 40 and 65% and the ventilation system running throughout the installation.

OPENING THE PACKAGES

- Wood is not a uniform material, each plank is unique.
- In order to harmoniously distribute the variations in colours, structures, and knots, we advise you to open 2-3 packages when installing and to mix and match the planks for optimal results.
- Handle the planks with care.
- Take note of the control number displayed on the package or on the back of the first plank that you install. This number should be identical for all the packages of the same site.
- Your parquet has undergone rigorous checks during all stages of the manufacturing process. If, however, an apparent defect has escaped these vigilance checks, do not install your floor and contact your supplier / reseller who will advise you further.

We remind you that any product installed is deemed to have been accepted and may not give cause for any subsequent claim.

INSTALLATION DIRECTION AND EXPANSION GAPS

- An essential expansion gap of 0.15% multiplied by the distance, but never less than 5 mm, shall be left around the edges of the floor. These expansion gaps will be left along the walls, in front of and around any obstacles (pipes, staircases, posts, chimney bases, etc.).
- The expansion gaps are maintained with small wedges, removed after installation.

Warning : Our floors are not compatible with wet rooms !